



6W(1/124 HP)

BRAKE MOTORS Frame size 61mm sq. (2.4 in.sq.)

Single-Phase

LEAD WIRE TYPE

SPECIFICATIONS

30MIN. DUTY, INSULATION CLASS A or E, 4POLES

Model	Output		Voltage (V)	Frequency (Hz)	Rated						Starting Torque			Magnetic Brake			Capacitor (μ F)	
	(HP)	(W)			Input (W)	Current (A)	Torque			Speed (rpm)	Torque			Current (A)				
						(kg-cm)	(N-m)	(oz-in)		(kg-cm)	(N-m)	(oz-in)	(kg-cm)	(N-m)	(oz-in)			
L6R6□C LE	1/124	6	1 \varnothing 100	50	25	0.22	0.49	0.048	6.80	1200	0.52	0.051	7.22	2	0.196	27.77	0.07	3.5
				60	25	0.22	0.38	0.038	5.28	1550	0.52	0.051	7.22	2	0.196	27.77	0.07	
L6R6□D LE	1/124	6	1 \varnothing 200	50	25	0.12	0.49	0.048	6.80	1200	0.52	0.051	7.22	2	0.196	27.77	0.07	1
				60	25	0.12	0.38	0.038	5.28	1550	0.52	0.051	7.22	2	0.196	27.77	0.07	
L6R6□B LE	1/124	6	1 \varnothing 220	60	30	0.13	0.38	0.038	5.28	1550	0.55	0.054	7.64	2	0.196	27.77	0.07	0.8
L6R6□E LE	1/124	6	1 \varnothing 115	60	25	0.25	0.38	0.038	5.28	1500	0.5	0.049	6.94	2	0.196	27.77	0.07	
L6R6□X LE	1/124	6	1 \varnothing 220-240	50	30	0.14	0.47	0.046	6.53	1250	0.64	0.063	8.89	2	0.196	27.77	0.07	1

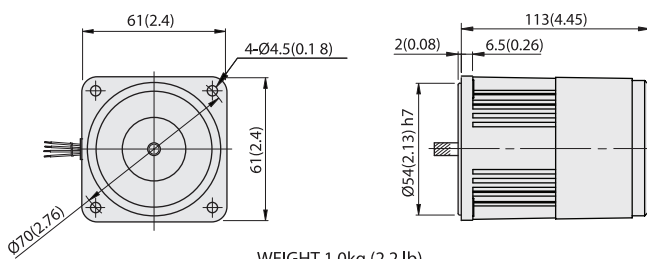
- * Model in grey screen represents the motors with IMPEDANCE PROTECTED according to UL regulation.
- * Model in dark grey screen represents the motors with IMPEDANCE PROTECTED according to CE regulation.
- * In case of some models certificated for export, the special cord like CE or UL is added after the existing model no. ex) L9160 □XH-CE, L9160 □EH-UL.
- * Insulation class for motors which acquired certificates for export is B.

BRAKE MOTORS

DIMENSIONS

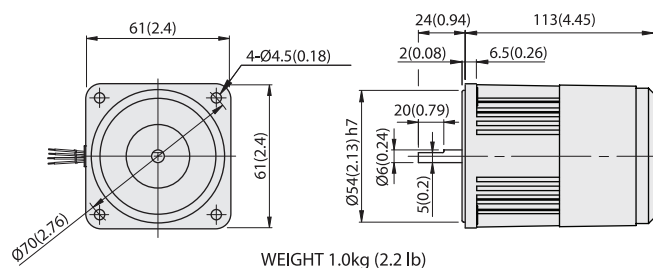
L6R6P□ LE

Unit : mm(inch)



WEIGHT 1.0kg (2.2 lb)

L6R6D□ LE

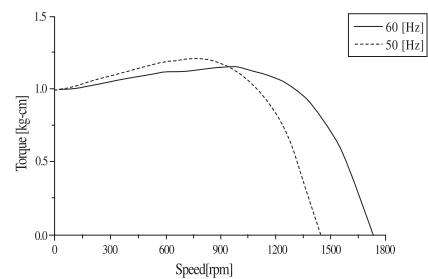


WEIGHT 1.0kg (2.2 lb)



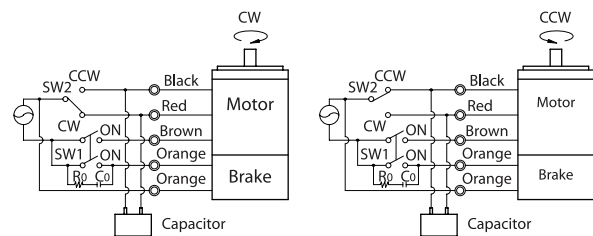
SPEED-TORQUE CURVE

Single phase L6R6□□ LE



CONNECTION DIAGRAMS

Standard or with T.P



The direction of rotation is seen from the end of motor shaft.